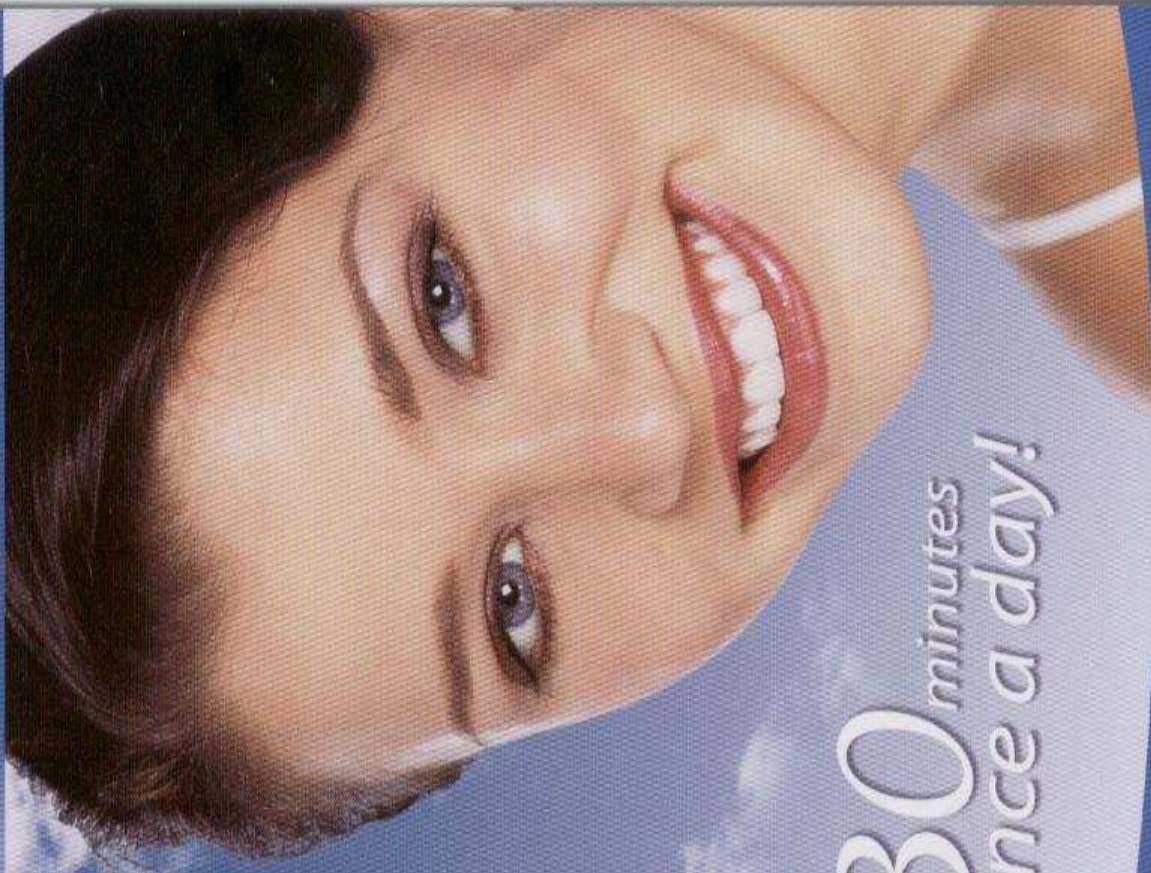


take-home tooth whitening



30 minutes
once a day!

premier Perfecta[®]
B r a v o[™]
Professional Tooth Whitening



30 minutes, once a day

Shorter wear time – only 7 hours is required to complete the 2-week take-home treatment. Other brands require 42 hours.

Superior whitening without sensitivity

Lasting results – 2 to 3 years, depending on your habits.

premier

NEW! Perfecta® Bravó™

A new day in take-home tooth whitening

Causes of Tooth Discoloration

Tooth color varies from person to person and can darken with age. Minerals, tobacco, antibiotics, foods, and beverages stain and discolor teeth. Depending on your type of tooth discoloration, we will select a whitening treatment that's right for you.

The Professional Take-Home Tooth-Whitening Process

Most patients are able to use our convenient take-home whitening system. You apply whitening gel to your teeth in a custom-made, soft, comfortable plastic tray. The gentle oxygenating action of Bravó's peroxide gel safely removes stains from your teeth. Bravó's 30-minute, once-a-day treatment allows you to choose the most convenient time to wear your tray. Throughout the treatment, we carefully monitor your progress.



Length of Treatment

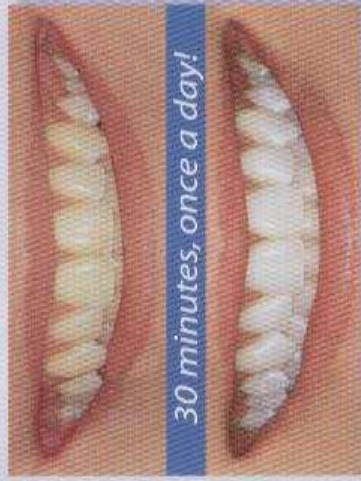
Within a few days of starting your program, you should notice whiter teeth. Normal treatment takes about two weeks, while difficult stains may take longer. Length of treatment is affected by stain type, stain depth, and tooth structure.

TV and Drug Store Tooth Whiteners

Successful tooth whitening is achieved through a program that combines a properly fitting tray, the proven Perfecta® whitening gel, and professional guidance. Many retail tooth whiteners use ineffective "one-size-fits-all" bleaching trays or strips. Others only cover a few teeth or require frequent touch-ups. These products do not achieve the same proven lasting results as professional treatment.

Keeping Your Whiter Smile

Your unique combination of habits, foods, and tooth structure will influence long-term results. Non-smokers who drink no coffee or tea usually have little change in five years. Some patients need a slight "touch-up" treatment after several years.



“ Bravó is convenient;
30 minutes, once a day.
I can wear it at work,
commuting or at home. ”

